

# Windows VM in Proxmox

Wie erstelle ich eine VM in Proxmox mit Windows Server die läuft?

Create: Virtual Machine ⊗

**General** OS System Disks CPU Memory Network Confirm

Node: proxmox-hp ⌵ Resource Pool: win-server ⊗ ⌵

VM ID: 201 ⌵

Name: DC01

---

Start at boot:

Start/Shutdown order: any

Startup delay: default

Shutdown timeout: default

ⓘ Help Advanced  Back Next

## Create: Virtual Machine



General

**OS**

System

Disks

CPU

Memory

Network

Confirm

Use CD/DVD disc image file (iso)

Storage:

ISO image:

Use physical CD/DVD Drive

Do not use any media

Guest OS:

Type:

Version:

Advanced

Back

Next

## Create: Virtual Machine



General OS **System** Disks CPU Memory Network Confirm

Graphic card:  ▾

SCSI Controller:  ▾

Machine:  ▾

Qemu Agent:

### Firmware

BIOS:  ▾

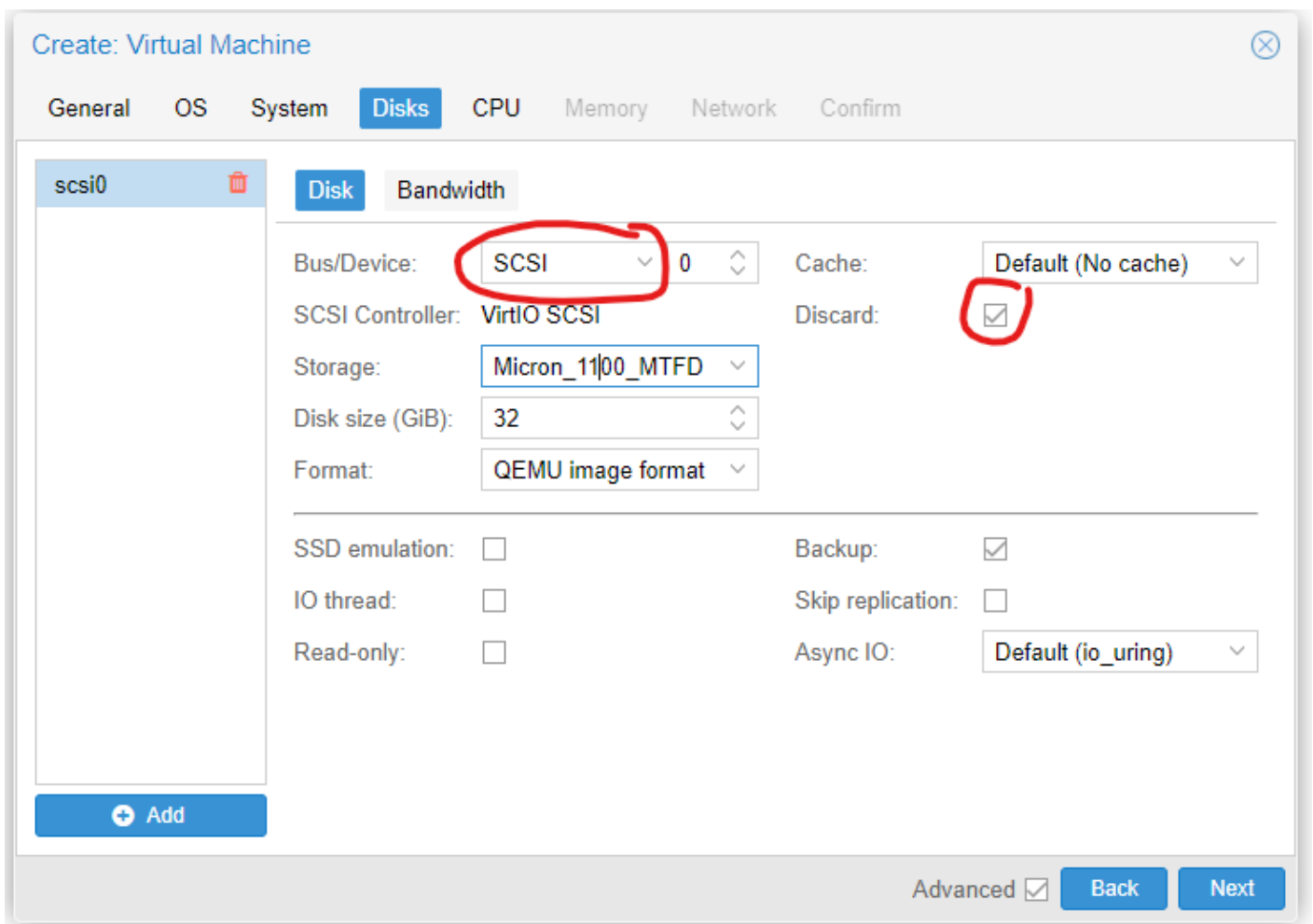
Add TPM:

Help

Advanced

Back

Next



Für beste Performance:

Create: Virtual Machine ✕

General OS System Disks CPU Memory **Network** Confirm

No network device

Bridge:  Model: VirtIO (paravirtualized)

VLAN Tag:  MAC address:

Firewall:

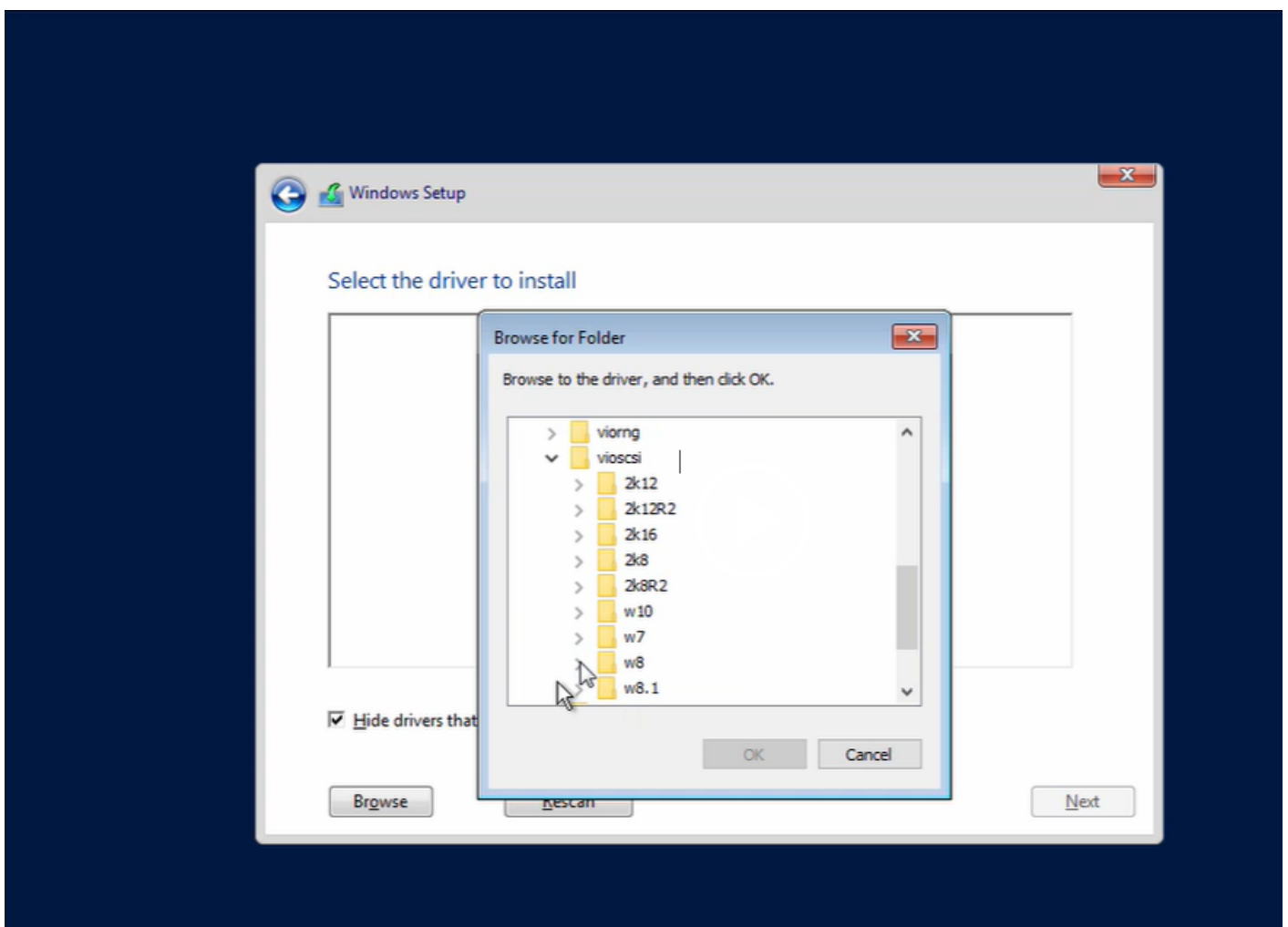
Help Advanced  Back Next

Treiber ISO einlegen

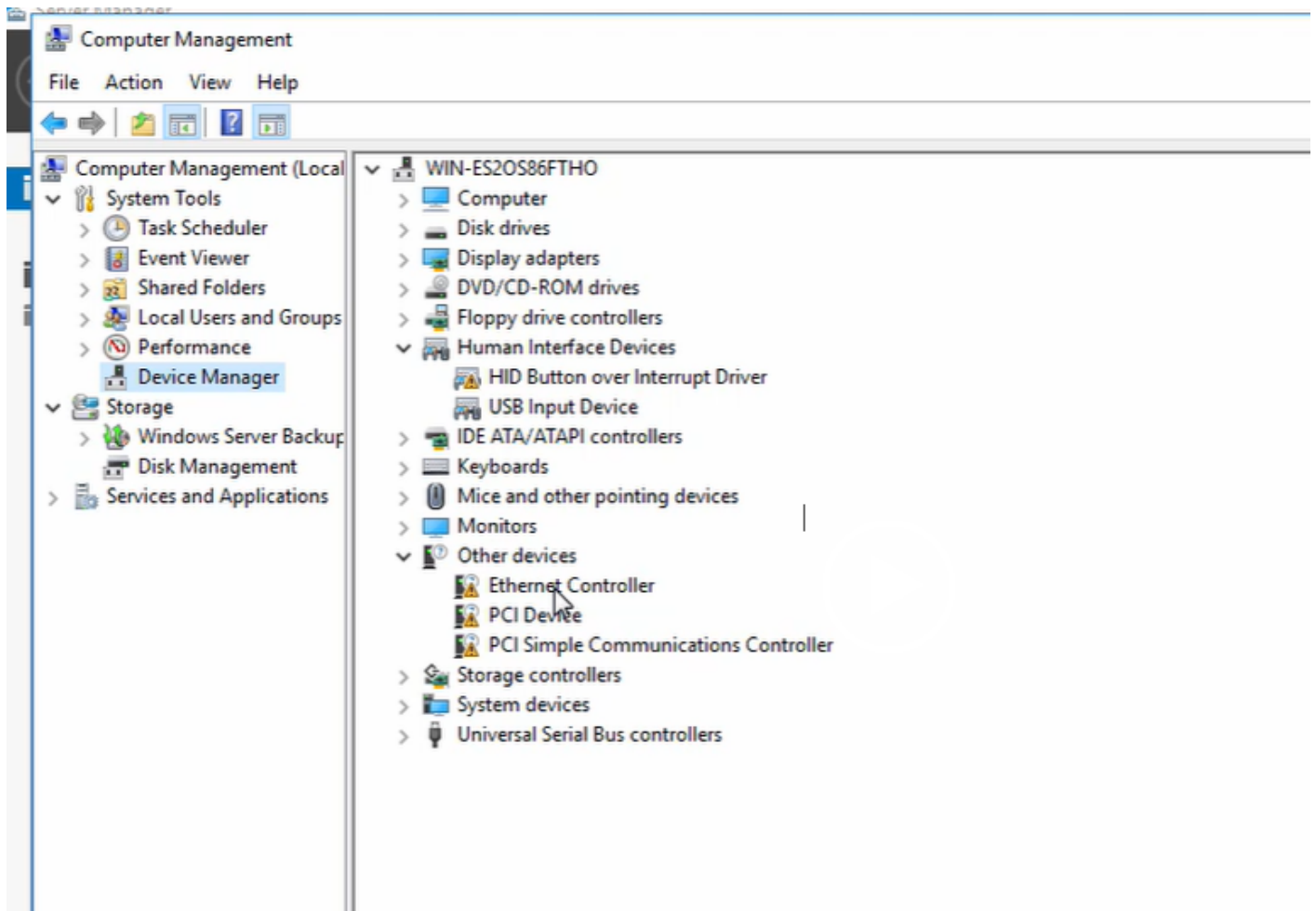
<span>Add</span> <span>Remove</span> <span>Edit</span> <span>Disk Action</span> <span>Revert</span>	
Memory	4.00 GiB
Processors	6 (1 sockets, 6 cores)
BIOS	Default (SeaBIOS)
Display	Default
Machine	pc-i440fx-7.0
SCSI Controller	VirtIO SCSI
CD/DVD Drive (ide0)	local:iso/treiber-ios.iso,media=cdrom,size=30666K
CD/DVD Drive (ide2)	local:iso/win-serv-19-en.iso,media=cdrom,size=5172572K
Hard Disk (scsi0)	Micron_1100_MTFD:201/vm-201-disk-0.qcow2,discard=on,size=32G
Network Device (net0)	virtio=AE:5B:96:B2:23:CA,bridge=vmbr0,firewall=1

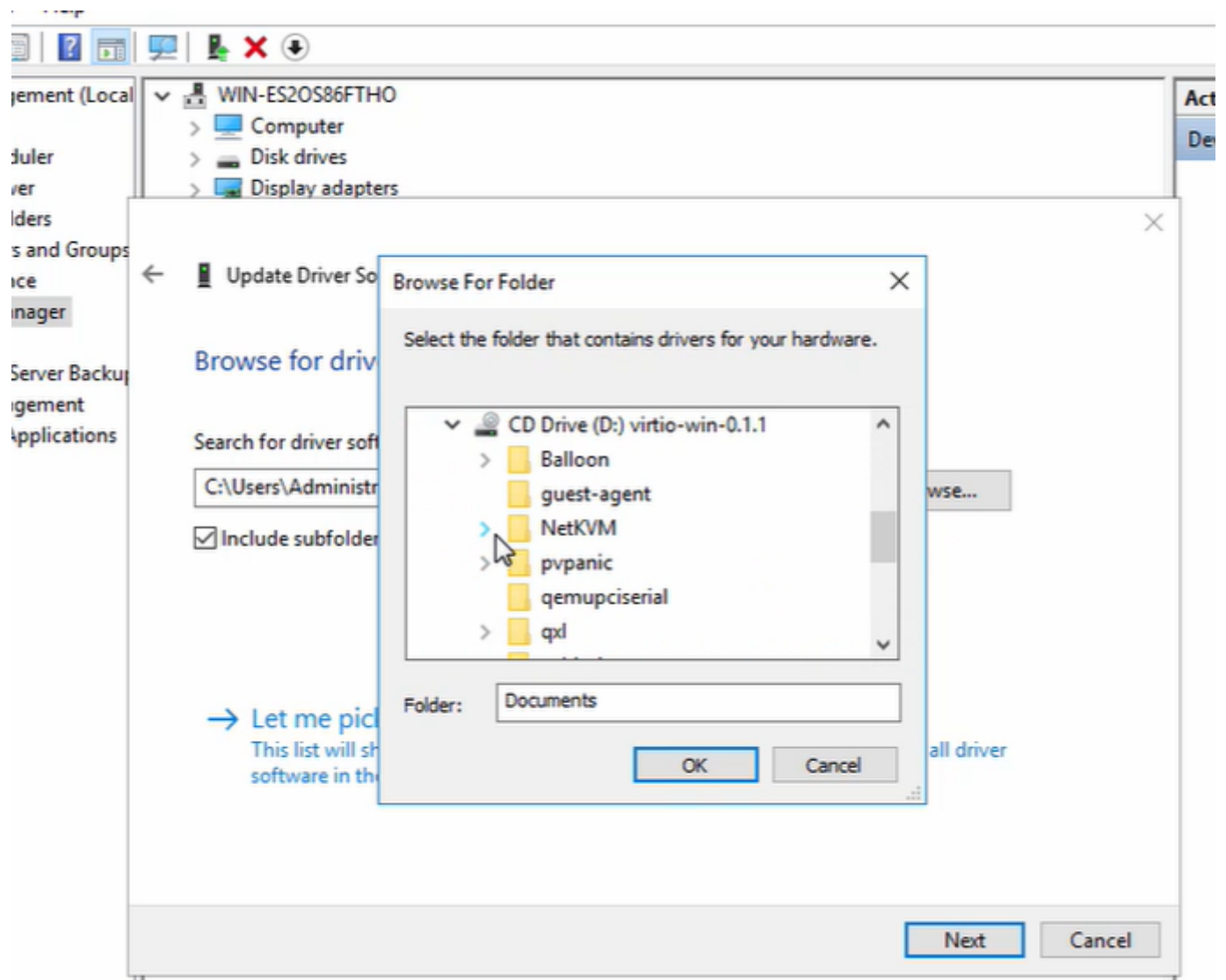
Options	OS Type	Microsoft Windows 10/2016/2019
Task History	Boot Order	scsi0, ide2, net0, ide0
Monitor	Use tablet for pointer	Yes
Backup	Hotplug	Disk, Network, USB
Replication	ACPI support	Yes
Snapshots	KVM hardware virtualization	Yes
Firewall	Freeze CPU at startup	No
Permissions	Use local time for RTC	Default (Enabled for Windows)
	RTC start date	now
	SMBIOS settings (type1)	uuid=f841a9d3-8d28-4469-9898-08c6b867f40f
	QEMU Guest Agent	Enabled
	Protection	No

## VM Starten und Windows installieren



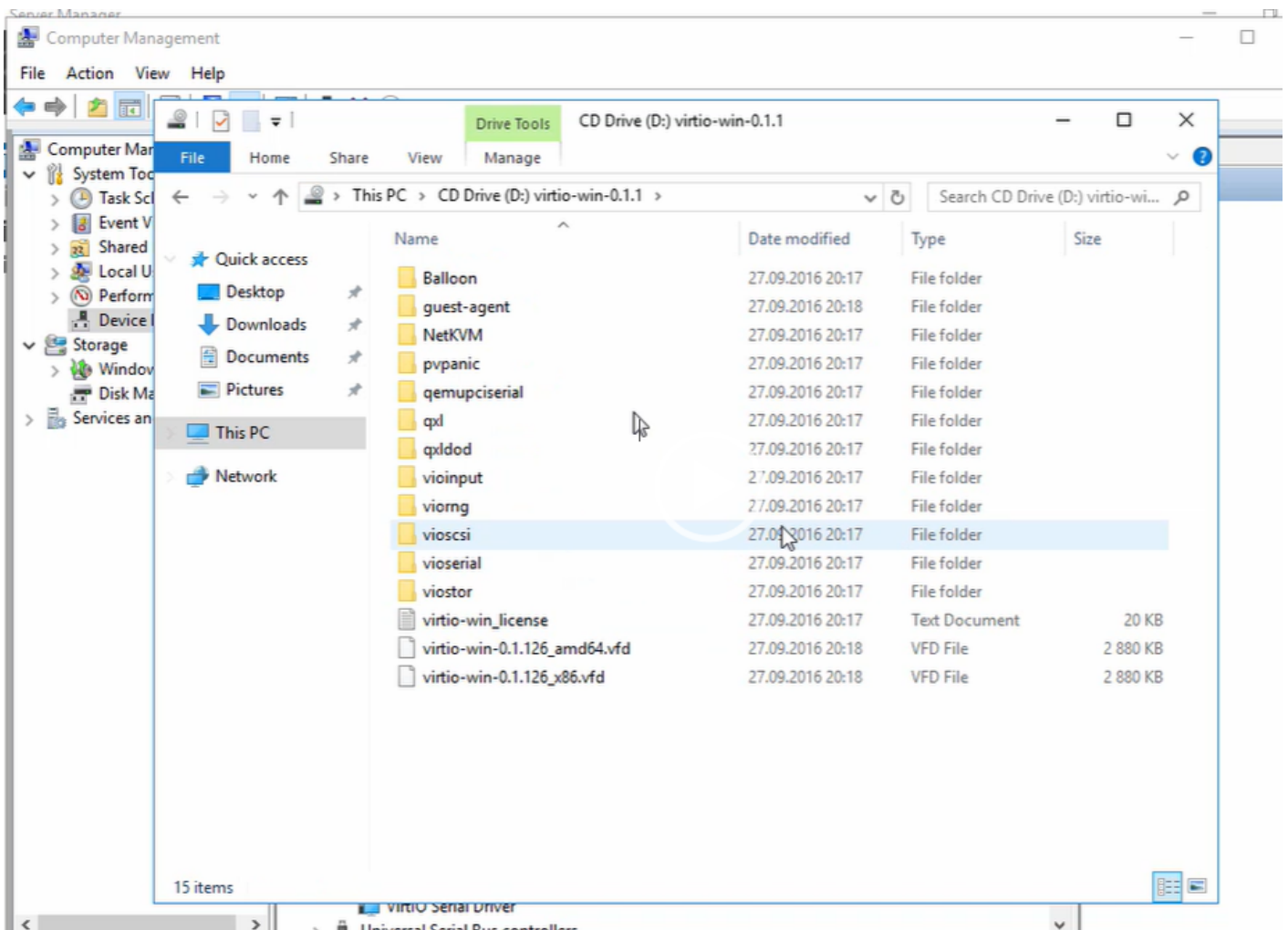
Bei der Installation die wird keine Festplatte angezeigt. Hier die ISO mit den Treibern auswählen und den Treiber VIOSCSI auswählen



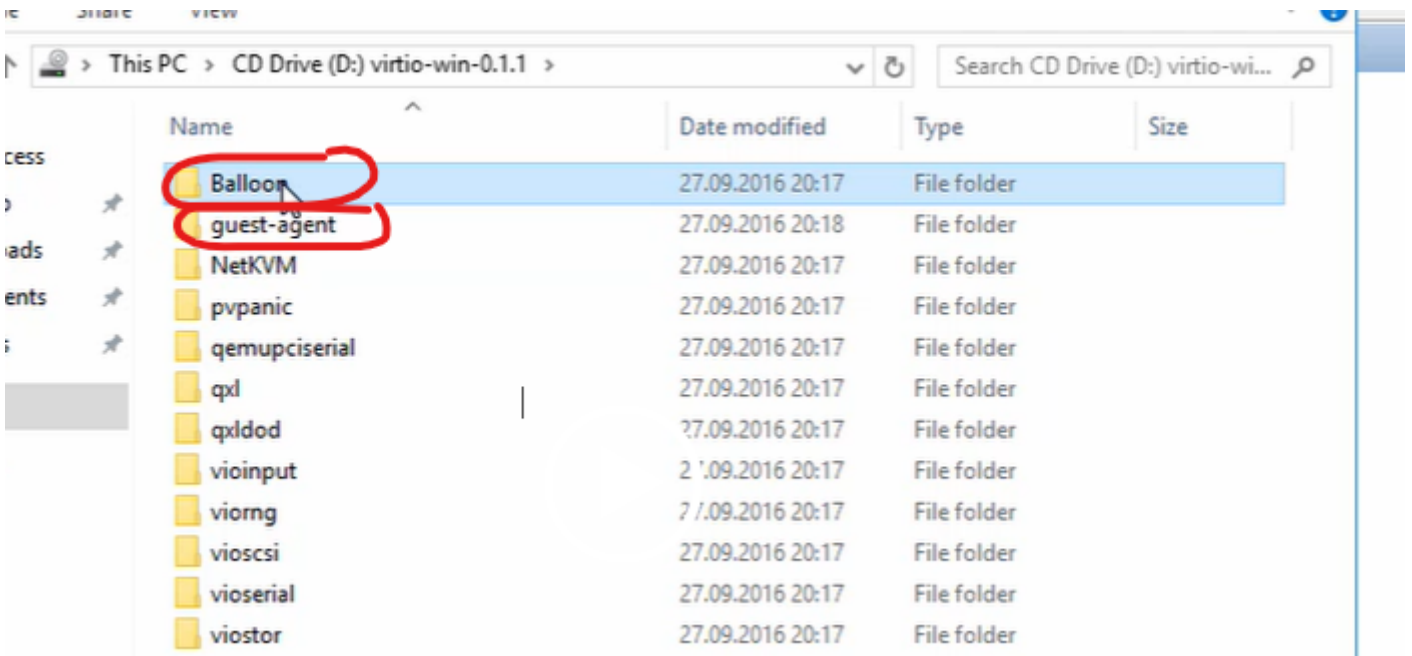


Auch mit PCI Devices machen: Nur DVD auswählen (E:) und Windows sucht den Treiber selbstständig

PCI Simple genau so



## QEMO Guest Agent installieren



Balloon installieren:

Ballon amd64 Ordner in C:Programme kopieren und in Balloon umbenennen

CMD > Navigiere zu C:Programm/Ballon und `blnsvr.exe -i` eingeben

Treiber Installieren in der Konsole

```
pnputil -i -a Treiber_inf_Datei.inf
```

---

Revision #1

Created 21 March 2023 10:20:29 by Hermann

Updated 21 March 2023 10:22:41 by Hermann